



Company Profile Y24
- Web Version -

VANDEWIELE is a global conglomerate with expertise in advanced electronics, technology solutions and innovative textile machineries

We imagine, build and integrate innovative solutions for the factory of the future in textile machines and mechatronics sectors



Textile

Mechatronics





















Aros



BMSvision



ROJ

Mesdan



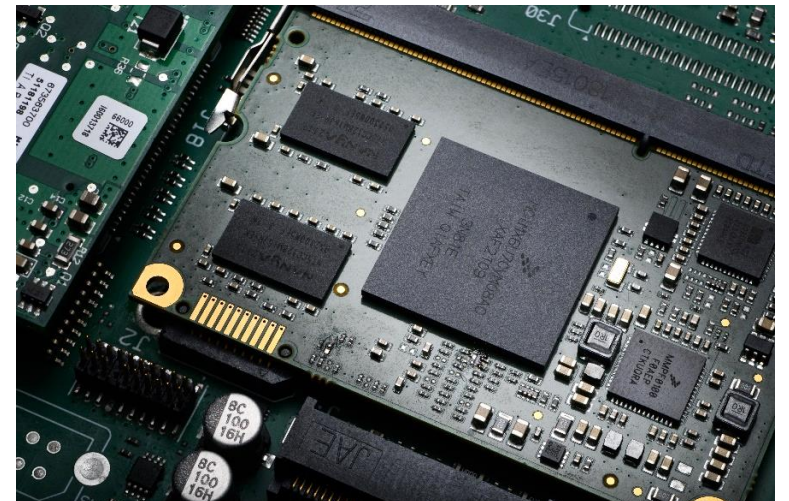
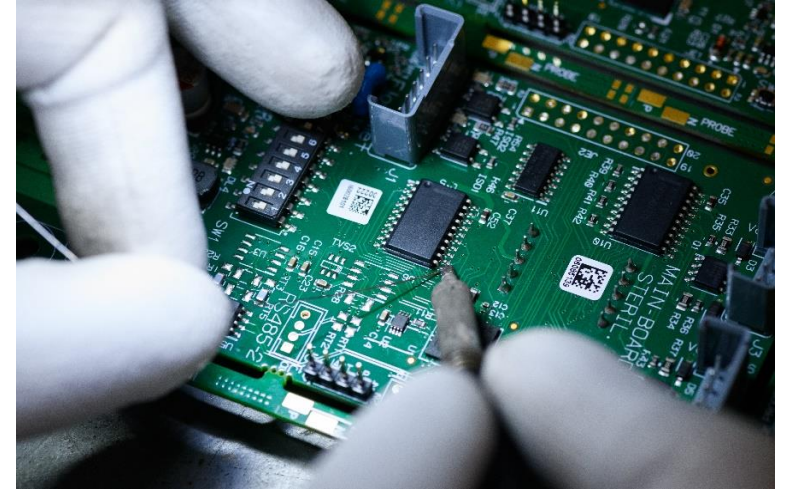
Loepfe

- Vandewiele in Y21 acquired Savio Group including Eutron
- Y22 Group aggregate revenues at 970M€
- 35% Group sales in China, 25% other Asia, Europe 20%, India 10%, RoW 10%
- 22+ Industrial plants
- Y22 R&D investments 96.0M€
- 3800+ employees



Eutron, established in 1986 as an Original Design Manufacturer (ODM) and Electronic Manufacturing Services (EMS) company.

- Eutron offers a variety of services from design prototyping, industrialization up to PCBA manufacturing
- Eutron manages the entire product life cycle and, leveraging its established expertise and internal R&D team, completes its offer by tailor-made System On Module (SoM) applications for electronics and mechatronics solutions



AUTOMATION & ROBOTICS



ELEVATOR



ENERGY AUTOMATION



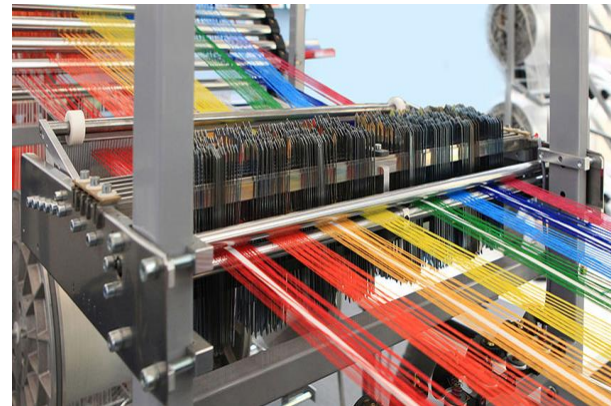
HEATING & VENTILATION



MONITORING & MAINTENANCE



PACKAGING



TEXTILE



VENDING MACHINES



56M€ Revenues in Y23



**More than 70 customers
over 20 countries**



210+ HCs





Romania plant

- Ramp up production line by Q4Y23
- New FP Test Equipment
- New selective soldering line



Italy Plant

- New P&P for complex PTH components and assembly operations
- New Selective Solder Machine
- New Automatized warehouse





 **VANDEWIELE**

BARCO



Focus on High mix | Mid volumes productions:

- 1.000.000+ PBCA | 20.000+ HMI
- 700+ codes: from 50pcs up to x000pcs lot size
- 12k+ SKUs with 300+ ECNs/yr
- SMT Machines:
 - Koh-Young SPI
 - FUJI AIMEX
 - SAKI 3D AOI
- PTH Machines:
 - ERSA Selective Solder
- Automatic Storage Systems
 - Essegi

Production Department



- Test Engineers Team focused on custom development of HW / SW In Circuit and Functional tests for wide industrial sectors
- Proprietary of General Purpose fully customizable functional test System
- SPEA 4050 & 4080 Flying Probe Tester
- SPEA 3030 Bed-Of-Nails Tester

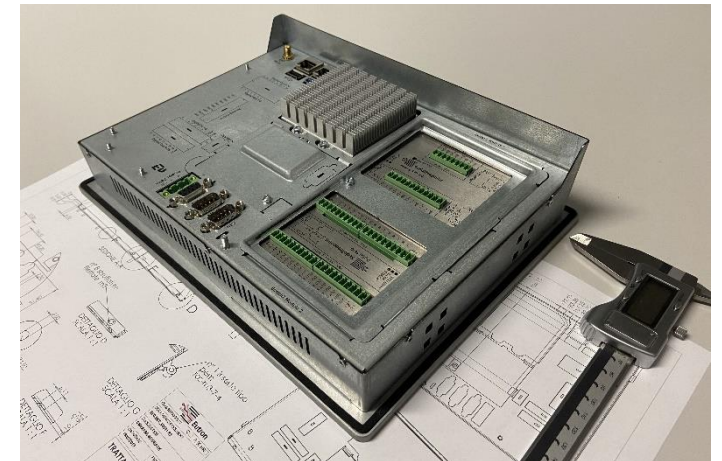
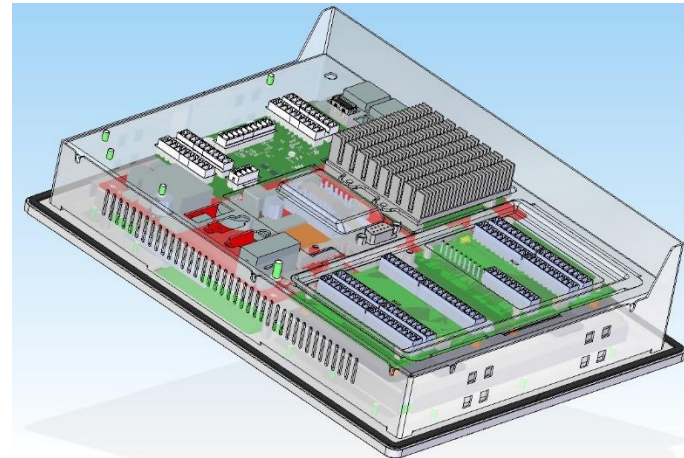
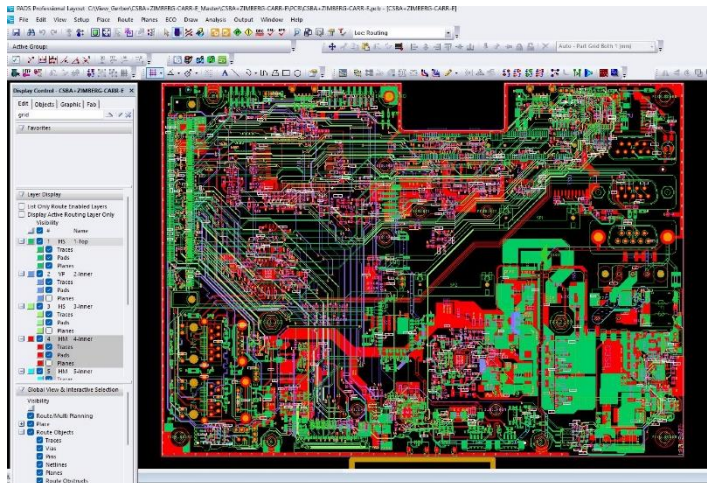
Advanced Test Department



- Internal and Integrated Process, Equipments and Team
- Short Delivery Lead Time (1-3 wks) | Small batch production (3/5 pcs)
- File gerber analysis and full material management | Direct materials sourcing by traditional or broker distribution channels
- PCBA assembly by Mycronic MY300LX P&P equipment
- Screen Printer MPM Momentum
- AOI Saki BF-3Di and X-RAY inspection
- ICT flying probing Testing SPEA 4060
- Mechanical assembly and conformal coating
- Final Prototype reports



- BOM analysis | Approved Vendor List check
- Components availability and Cost analysis
- PCB Layout design
- DFF | DFM | DFT
- Signal and Power integrity analysis and report
- PCBA vs enclosure integration
- Project design files and production specifications full package release





POWER CONTROL & CONVERSION

- Brushless Motor Drives
- Linear and Stepper Drives

SOM & HMI APPLICATIONS

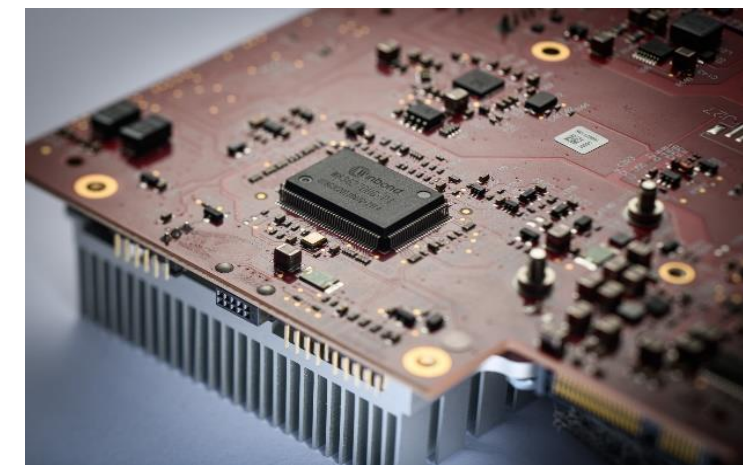
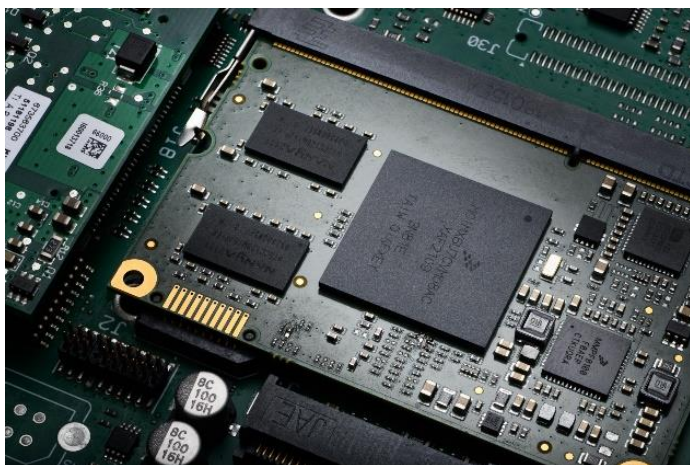
- Custom SoM Design
- High performance processing
- Graphic applications

INDUSTRIAL CONTROL SYSTEMS

- Industrial buses (EtherCat, Profinet, etc.)
- I/O & Analog management

INDUSTRIAL GATEWAY & IOT

- Localization (GPS)
- Cloud connection
- Predictive maintenance



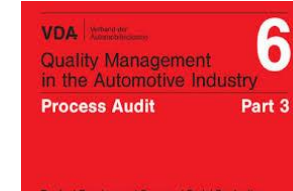
Integrated Management System

- ISO9001:2015 - Quality Management System certified
- ISO14001:2015 - Environmental Management System certified
- ISO45001:2015 - Occupational Health and Safety Management System



Process Audits Management

- VDA 6.3 - Audited in 2019 by a 3rd party VDA 6.3 and IATF certified lead auditor (Rating 'A' – Quality Capable)



Products Qualification and Performance

- IPC-A-610 Class 2 and 3 - Acceptability of Electronics Assemblies
- IPC-7711 and IPC 7721 - Rework, Repair and Modification of Electronics Assemblies



People trainings and skills

- Application of Six Sigma methodology by Green Belt / Black Belt certified people
- Application of Lean Manufacturing and Mistake Proofing techniques

Thank You

For Listening

Eutron, founded in 1986, is a key player in the design, engineering, and production of electronic and mechatronic solutions.

A pioneer in electronics for the textile market and strengthened by the Belgian group Vandewiele, Eutron has expanded its horizons by delivering innovative solutions in new sectors, including Vending, Elevator, Industrial Automation, and Energy Distribution.

Guided by the principles of Lean Production, Eutron shapes customer ideas through cutting-edge digital technologies, ranging from Design-To-Performance to Servitization, encompassing Prototyping, Test Development, and optimization of the Integrated Supply Chain.

Eutron manages the entire product life cycle and, leveraging its established expertise and internal R&D team, completes its offer by tailor-made System On Module (SoM) solutions.